



SPONSORED BY

D&R
SPORTING GOODS



LITTLE TROUT BAY FISH DERBY



LITTLE TROUT BAY CONSERVATION AREA 

SATURDAY, AUGUST 24, 2024 

8:00 a.m. - 4:00 p.m. 

ENTRANCE FEE: \$120 (CASH ONLY) 

GENERAL

- Registration for the Little Trout Bay Fish Derby OPENS on July 19, 2024 and CLOSES on August 17, 2024.
- All contestants agree to abide by the Rules and Regulations of the Little Trout Bay Conservation Area and regulations of the Fish and Wildlife Conservation Act.
- Contestants require a valid Ontario Fishing License or Band Card, in compliance with the Ontario Fishing Regulations, Fisheries Management Zone 9.
- Failure to comply with the derby's rules and regulations or the applicable Ontario laws will result in automatic disqualification and forfeiture of prizes. No refund will be provided.
- Contestants will abide by the Invasive Species Act as it relates to personal watercraft and watercraft equipment. Prior to the derby, all vessels, trailers, equipment, and engines must be free of any vegetation, algae, mussels, and mud. Anglers should practice clean, drain, and dry routines once the derby has been completed.
- Registration and vessel preparation will occur between 6:30 a.m. and 8 a.m. The derby will begin at 8 a.m. with the sound of an air horn. All participants must return to the weigh-in station by 4 p.m. or their catch will not qualify.
- Registration is located at the Little Trout Bay Pavilion, where contestants are required to sign in and prepare for launch. Contestants must have their boats examined by assigned staff in order to become fully registered. Contestants arriving by water must pull in to register and have their boat examined.
- All vessels must corral in Little Trout Bay near the orange marker buoy until the horn sounds at 8 a.m. signifying the start of the derby.
- It is the responsibility of the derby participants to clean and refrigerate their catch for consumption once the fish have been weighed.
- Do not clean your fish on site. Fish must be transported home whole for cleaning. This is in an effort to prevent attracting predators to the Conservation Area and public boat launch.
- Any updates to the rules, regulations, or logistics will be posted on social media and the following websites:
 - Municipality of Neebing: <https://www.neebing.org/derby>
 - LRCA: <https://lakeheadca.com/>

REGISTRATION

- Registration for the Little Trout Bay Fishing Derby is \$120 per team, which includes the launch fee.
- Derby entry is capped at 25 teams, with two participants per team. Each team must pay the entry fee and be fully registered to participate. If teams are arriving by water, additional teams will be allowed.
- Derby registration is open to all persons 13 years of age or older at the time of registration. Individuals under the age of 18 need a parent/guardian to sign off on the registration form in order to participate. If an individual under the age of 18 is successful in winning a prize, the prize will be awarded to their legal guardian.
- All derby participants must register to receive their event wristband. The wristband must be shown to be eligible to qualify for prizes.

DERBY RULES

- All teams participating in the derby must have their watercraft inspected to become fully registered. If a team refuses the boat inspection, they will be automatically disqualified, and no refund will be issued.
- The Little Trout Bay fishing derby is based on the “Best of 5” format. Angling teams will catch and keep what they believe are their best five fish. The fish are then weighed (lbs) by derby staff at the Little Trout Bay Pavilion.
- The following species have been selected for the derby: Lake Trout, Whitefish, and Salmon ONLY. Any other species caught will not be included in the “Best of 5”.
- All eligible fish must be caught using legal angling techniques, using a hook, line, rod, and reel (i.e. no commercial nets). Evidence of illegal fishing methods or practices will result in immediate disqualification.
- Contestants must remain within the designated boundary as seen in the following map.
- Fish with apparent snag or foul hook marks, gaff, or gill marks, may not be accepted.
- Derby participants are responsible for their safety and actions at all times before, during, and after the fishing derby.
- A non-registered individual may not be fishing with registered participants.
- Consumption and possession of open alcohol is prohibited as defined under the Liquor License Act. If caught with open alcohol, participants will be immediately disqualified.
- In the event of a tie, the prize will be awarded to the team that submits their catch first.
- All decisions made by the Officials are final.

CANCELLATIONS/REFUNDS

Due to severe weather conditions, or other uncontrollable events, the derby may be canceled at any time. In the unlikely event that the derby is canceled, participants’ names will be entered into a draw for the respective prizes. Draw winners will be contacted through the information provided on their payment form. No refunds, in whole or in part, will be made in the event of a tournament cancellation.

Failure to comply with the rules and regulations of the derby will result in an automatic disqualification. Contestants disqualified from the derby will NOT receive a refund for their registration fee.

PRIZES

Prizes will be awarded to the registered contestant for the “Best of 5” per angling team. The winner is based on cumulative weight (pounds) of the fish. The species included in the derby are Lake Trout, White Fish, and Salmon only. All other species will not count towards your “Best of 5” fish.

- 1st Place Prize: \$1,000
- 2nd Place Prize: \$600
- 3rd Place Prize: \$400

Three additional prizes will be awarded to the youngest and oldest angler participating in the derby and a mystery weight, thanks to D&R Sporting Goods and Mighty Mitch and Jungle Joe’s Jigflies. Please be sure to disclose the participant’s age on the registration form to be considered for these prizes.

CONTRIBUTE TO CITIZEN SCIENCE

Anglers will have the option to contribute to citizen science by donating a sample of their fish to be tested for contaminants. The sample is a 2” X 5” portion of the fish taken from beside the dorsal fin. The samples will be frozen and shipped to the Ministry of Environment, Conservation, and Parks’s (MECP) lab for testing. MECP will conduct standard testing of the samples for contaminants to ensure the accuracy of consumption advisories found in the Guide to Eating Ontario Fish.

LEGAL

The Municipality of Neebing, the Lakehead Region Conservation Authority (LRCA), derby sponsors, organizers, and their agents will not be liable for the loss of property or for injury to any contestant or spectator. Derby participants are responsible for their safety and actions at all times before, during, and after the tournament.

Visitors to a Conservation Area acknowledge and understand the risks associated with visiting and recreating at the Area, including but not limited to: weather, trip hazards, wildlife, insects, actions of other people, the inherent risks associated with participating in various activities while on Lakehead Region Conservation Authority (LRCA) property and operators of motor vehicles around the parking area. Being aware of these hazards, visitors voluntarily elect to fully accept and assume all risks and responsibilities for any injury, loss and/or damage to personal or property that incur as a result of visiting and recreating at the Area. The Lakehead Region Conservation Authority is not responsible for, not held liable, for any injury, loss, and/or damage to persons or property incurred by visitors to a Conservation Area.

SPONSORED BY

D&R
SPORTING GOODS



In registering for the event(s)/program(s), I recognize, acknowledge and assume full responsibility for all injuries, damages or loss which may occur in or about any event(s)/program(s) on the premises and he/she/I hereby fully release, discharge and otherwise indemnify and hold harmless the LRCA and Neebing Municipality, all associated facilities, organizations, and its owners, employees, sponsors, volunteers and agents from any and all claims, demands, damages, loss, rights of action, present or future resulting from or arising out of any person's participation in any event(s)/program(s), in any manner, in any and all activities connected with or associated with this event(s) or use of its facilities.

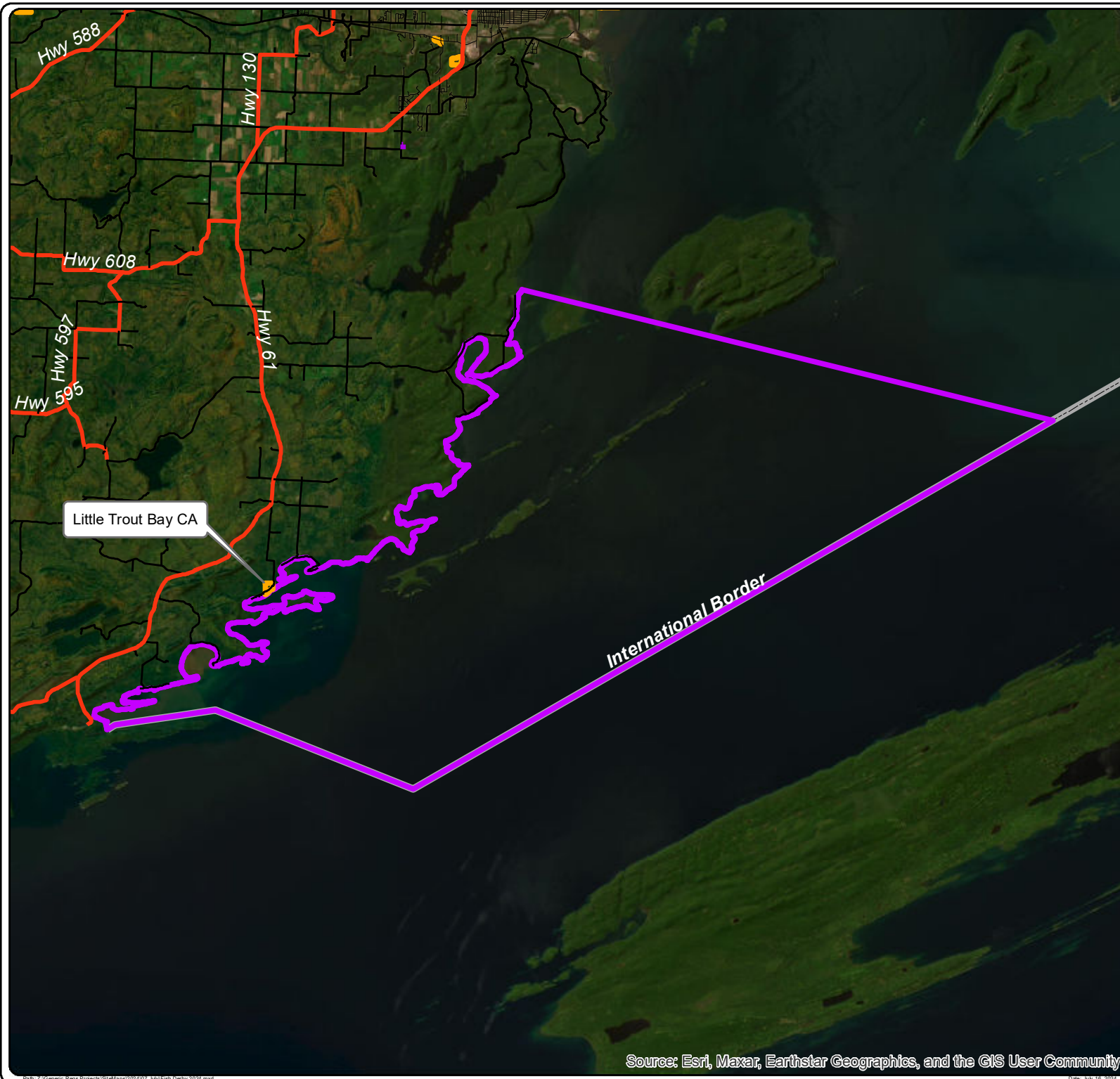
In addition, he/she/I fully agree(s) to follow the derby rules and regulations, as well as any applicable policies and procedures as set by the LRCA and Neebing Municipality. He/she/I understand(s) that failure to do so may result in immediate disqualification. I here waive and release all claims for injuries, damages, or loss arising out of this program that I or the above participant might sustain.

PHOTO RELEASE

By signing this form, I hereby grant permission to the LRCA and the Neebing Municipality to use photographs and/or video of me taken on April 25, 2024, at the Little Trout Bay Fishing Derby in publication, social media posts, news releases, and in other communications related to the mission of the LRCA and Neebing Municipality.

WWW.LAKEHEADCA.COM | WWW.NEEBING.ORG

f i X @LAKEHEADREGION



Little Trout Bay Fish Derby Boundary

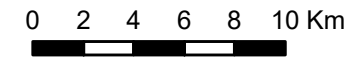


Legend

- Little Trout Bay CA
- Fish Derby Boundary

Roads

- Highway
- Road
- Street



1:300,000

This publication was produced by:
 Lakehead Region Conservation Authority
 130 Conservation Rd.
 Thunder Bay, ON
 P7B 6T8

Base data used under license through the members of the Ontario Geospatial Data Exchange.

This map is illustrative only. Do not rely on it as being a precise indicator of routes or features, nor as a guide to navigation.

Coordinate System: NAD 1983 CSRS UTM Zone 16N
 Projection: Transverse Mercator
 Datum: North American 1983 CSRS
 Units: Meter

Created by: michellew
 Copyright 2024, LRCA

Source: Esri, Maxar, Earthstar Geographics, and the GIS User Community